

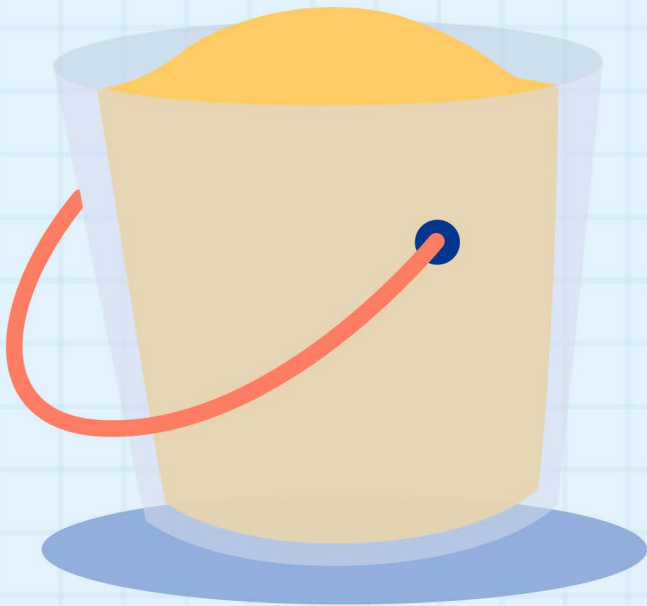
# ARROSOIR EN FER



# LOUPE GROSSISSANTE



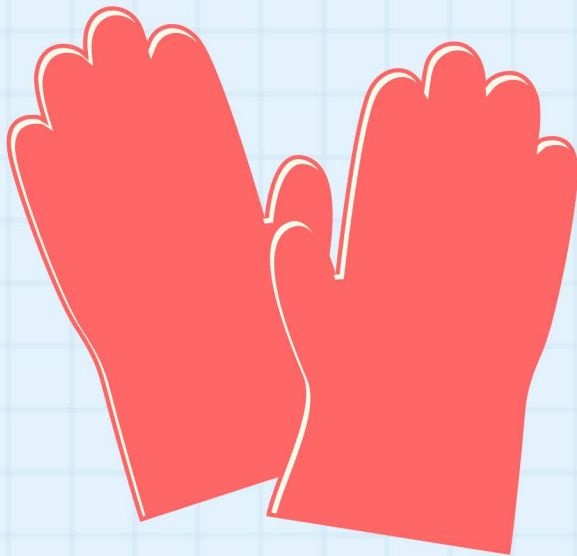
# SEAU TRANSPARENT



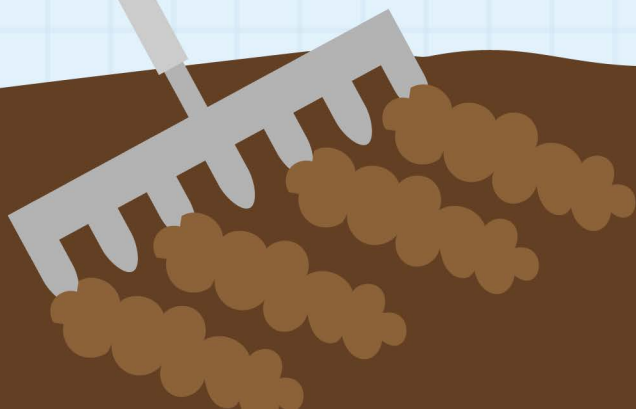
# BOTTES JAUNES



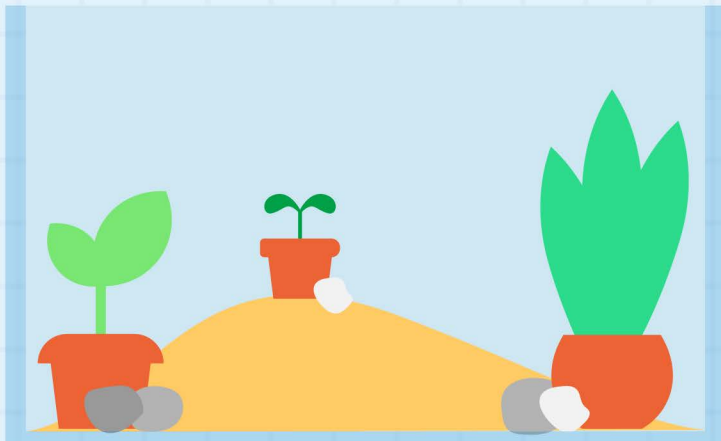
# GANTS ROUGES



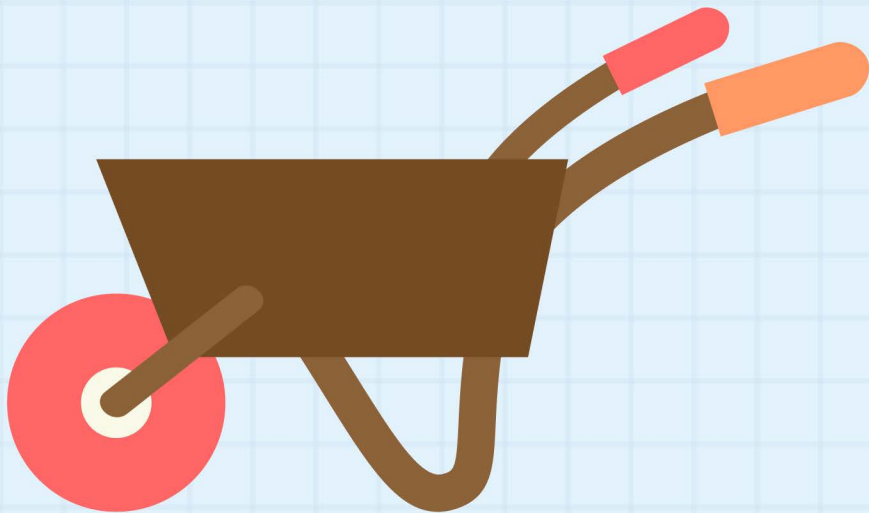
# RÂTEAU EN ZINC



# TERRARIUM EN VERRE

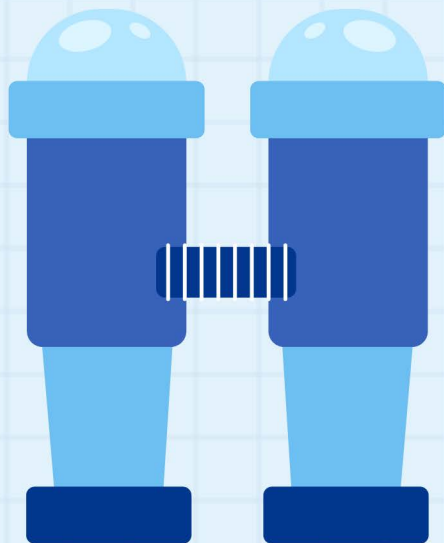


# BROUETTE EN BOIS





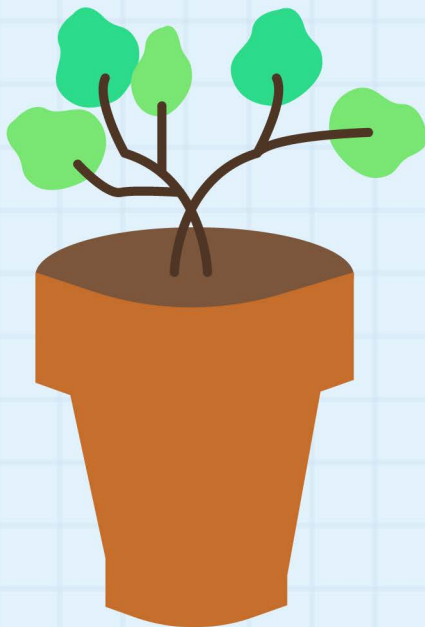
# JUMELLES BLEUES



# MANGEOIRE À OISEAUX EN PIERRE



# POT EN TERRE



# ÉPUISETTE LÉGÈRE



# LAMPE FRONTALE



# RONDIN DE BOIS LOURD



# TRUELLE MÉTALLIQUE



# PANIER EN OSIER

